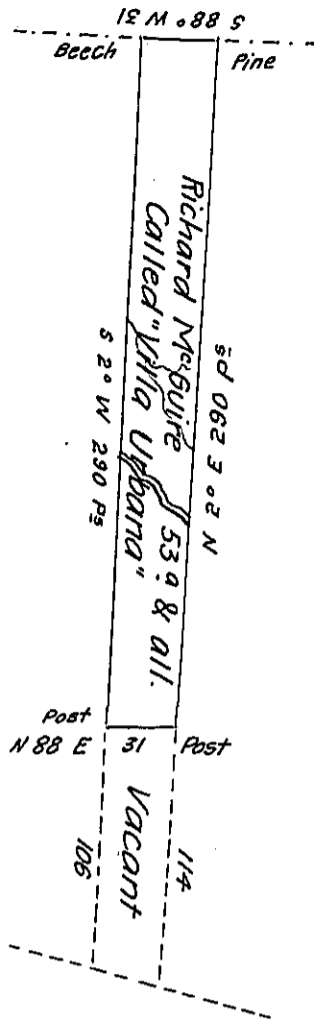


Samuel Leech

John Taylor



One - Lavedon

Situate on the Waters of Conemaugh - in Cambria Township
 Somerset County and Surveyed the 7th day of March 1803 in Pursuance
 of a Warrant dated the 14th day of February 1803.

P:

John McClean Deputy

To Samuel Cochran Esquire

Surveyor General

IN TESTIMONY that the above is a copy of the original remaining on file in
 the Department of Internal Affairs of Pennsylvania, made
 conformably to an Act of Assembly approved the 16th day of
 February, 1833, I have hereunto set my Hand and caused
 the Seal of said Department to be affixed at Harrisburg,
 this fourth day of January 1906

Isaac B. Johnson
 Secretary of Internal Affairs.